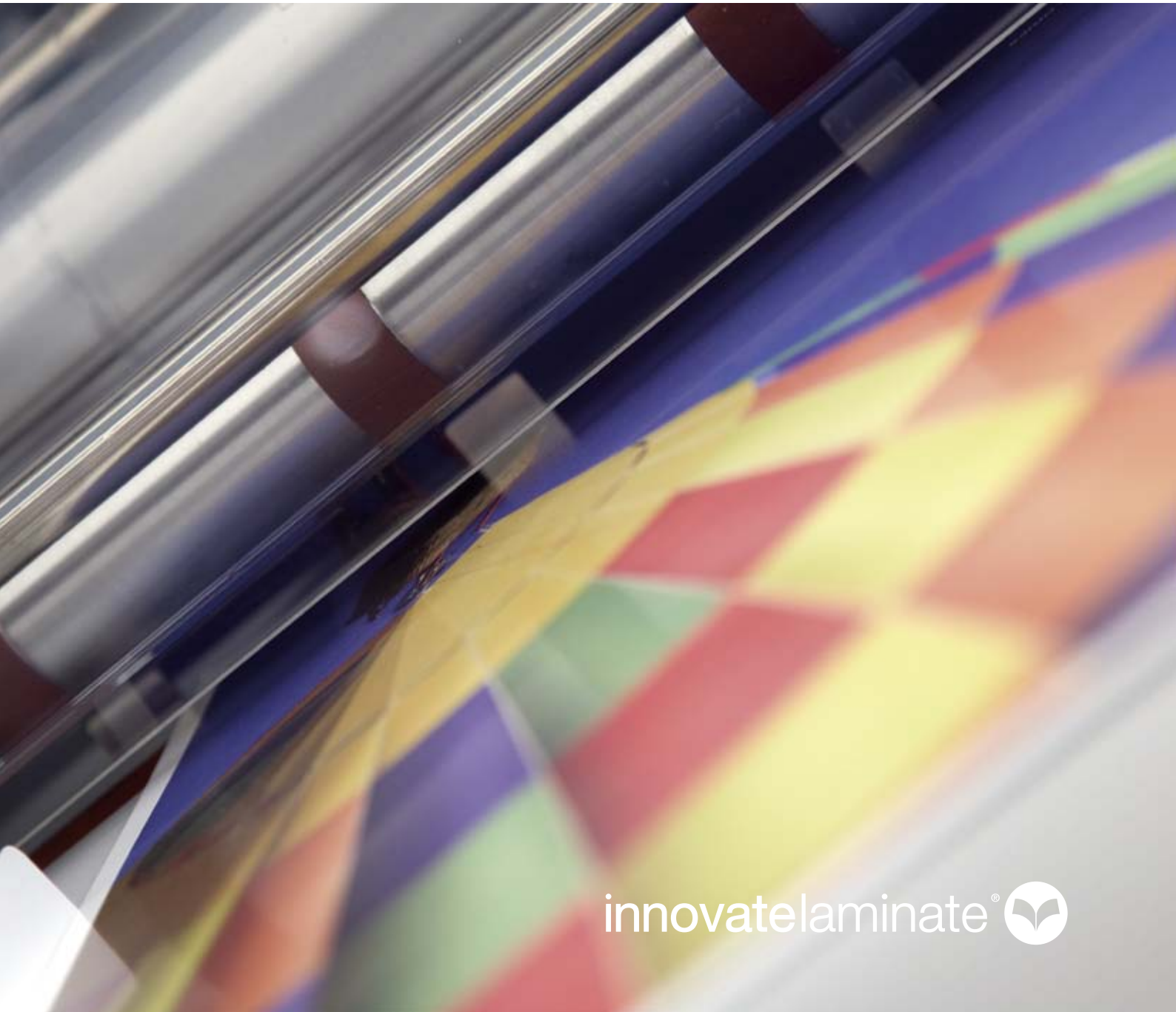


vivid.

Cost-effectiveness at
your fingertips.

MATRIX SINGLE-SIDED LAMINATION



innovatelaminate® 

QUALITY

RELIABILITY

INNOVATION

DESIGN

SUPPORT

EASE

PERFORMANCE

SPEED

Matrix® laminators are perfect for your world.

The best value single-sided laminators on the market, they're simple to use, easy to maintain, quick and reliable.

The Matrix® range is designed in-house by Vivid to help breathe life into your business by allowing you to provide your customers with a service you previously had to outsource.



Matrix does the entire job, from start to gloss

Cost effectiveness

Matrix® systems are incredibly cost-effective, meaning you can now truly offer a one-stop shop for your customers.

You can avoid the costly trips and set up costs of outsourcing to the print finisher on the other side of town. So you can increase the service you offer and cut your expenses – all with no delays, too.

Matrix® offers you the ideal investment in finishing your digital print work – on demand – for brochures, folders and business cards.



The beauty of simplicity, the reliability of strength

Matrix® laminators are made using the strongest parts available – they're reliable, simple to use and are capable of returning much more than your investment.

Designed in-house we can make sure that everything about them is aimed at helping you to do your job more efficiently.





◀ Always hungry for work

Whatever finish you choose, a Matrix® laminator can finish the job in a matter of minutes.

They're easy to set up, quick to warm up and perform rapidly, finishing any job quickly and efficiently.

The semi-automatic feeder with auto-overlap makes it so easy to feed your work through the laminator.

Fingertip control ▶

Our exclusive patented multi-lingual control panel is simple, smooth and very easy to use.

It takes virtually no training to set up your laminator for whatever you need, yet it gives you complete control over every job.



or matt finish.



◀ Keeping things smooth

Our unique anti-curl presets, in sync with the control panel, ensure that whatever you laminate – a poster or a brochure, a folder or insert sheet – comes out smooth and flat with no curl or uplift.

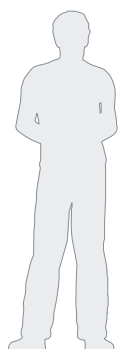


▶ Gloss over quickly, matt in minutes

The automatic separator works fluidly with the laminator, ensuring your job is ready for the next stage the moment it's through.

“ The money I’ve saved on finishing costs has not only paid for my Matrix machine, it’s added a useful revenue stream in a very tough economy. ”

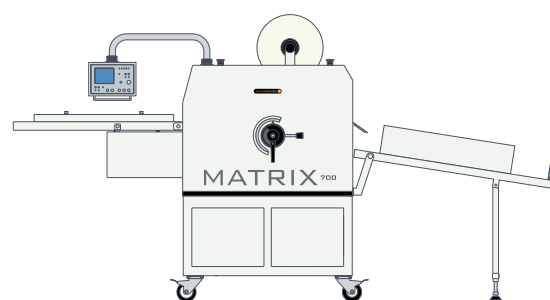
- quick set-up
- suitable for digital & litho prints
- auto-sheet register



▲ MD-460/650



▲ MX-370/530



▲ MX-700

Key features

	MD-460	MD-650	MX-370	MX-530	MX-700
Semi-Automated Feed	-	-	•	•	•
Automatic Sheet Register and Overlap	-	-	•	•	•
Manual Overlap	•	•	-	-	-
Automatic Separation	-	-	•	•	•
Film Perforator	◦	◦	•	•	•
3" (77mm core)	•	•	•	•	•
1" (25mm core)	•	•	-	-	-
Anti-Curl Bar	•	•	•	•	•
Single Sided Lamination	•	•	•	•	•
Encapsulation / Double Sided Lamination	•	•	-	-	-
Collection Tray for Finished Prints	-	-	•	•	•
Pneumatic Roller Pressure	-	-	-	-	•

• Yes - No ◦ Optional

“ With my Matrix laminator, I can start a print run and finish it whenever I’m ready. I don’t have to fit my work round anyone else, and I can keep complete control over quality, too. ”

- up to 20m/min
- quick warm-up time
- from SRA4 up to B1
- 70gsm upwards
- easy to use controls
- anti-curl bar for perfectly flat results
- range of accessories
- small footprint

Specifications

	MD-460	MD-650	MX-370	MX-530	MX-700
Max. Laminating Speed (m/min)	1.4	1.4	10	10	20
Max. Lamination Film Width (mm)	460	650	340	500	700
Paper Thickness (gsm)	70 +	70 +	135 +	135 +	135 +
Maximum Sheet Width (mm)	470	660	420	550	730
Warm-up Time (mins)	10	10	10	10	15
Temperature Range (°C)	0-140	0-140	0-140	0-140	0-140
Power Supply (V)	220/240	220/240	220/240	220/240	220/240
Power Supply Required (Amps)	13	13	13	13	32
Power Consumption (W)	950	1600	2200	2400	6000
Pneumatic Requirements (L/Mpa)	-	-	-	-	65/0.75
Overall Dimensions - Width (mm)	720	960	800	900	1675
Overall Dim. - Depth x Height (mm)	480x400	480x400	1800x1400	2050x1400	1375x1700
Gross Machine Weight (kg)	45	55	190	220	495
Warranty	1 year	1 year	1 year	1 year	1 year

Accessories

	MD-460	MD-650	MX-370	MX-530	MX-700
Optional Stand	•	•	S	S	S
Film Slitter	-	-	•	•	•
Film Perforating System	•	•	S	S	S
Ultra-Quiet Compressor	-	-	-	-	•
Automatic Feeder (coming 2011)	-	-	•	•	•

• Yes - No S Standard

FRESH
CONTROL
EFFECTIVENESS



Catering for every size

Our range covers everything from simple hand-fed laminators through to semi-automatic systems, catering for sheets of business cards up to a maximum B1 paper size.



or matt finish, quickly and smoothly.

“ I know I can rely on Vivid for everything – their machines are reliable, but their service is even better. ”

- gloss OPP film
- matt OPP film
- digital OPP for heavy ink coverage
- 1" and 3" core
- 1000m rolls

Prolife Films / 30mic

		MD-460	MD-650	MX-370	MX-530	MX-700
Gloss - 315mm x 200m x 1" core	SOP315G	•	•	-	-	-
Gloss - 440mm x 200m x 1" core	SOP440G	•	•	-	-	-
Matt - 315mm x 200m x 1" core	SOP315M	•	•	-	-	-
Matt - 440mm x 200m x 1" core	SOP440M	•	•	-	-	-
Gloss - 315mm x 1000m x 3" core	FL1L2	•	•	•	•	•
Gloss - 440mm x 1000m x 3" core	FL1L3B	•	•	-	•	•
Gloss - 635mm x 1000m x 3" core	FL1L5	-	•	-	-	•
Matt - 315mm x 1000m x 3" core	FM1L2	•	•	•	•	•
Matt - 440mm x 1000m x 3" core	FM1L3B	•	•	-	•	•
Matt - 635mm x 1000m x 3" core	FM1L5	-	•	-	-	•
PROLIFE DIGITAL RANGE / 42mic						
Gloss - 315mm x 150m x 1" core	SOPSS315G	•	•	-	-	-
Gloss - 440mm x 150m x 1" core	SOPSS440G	•	•	-	-	-
Matt - 315mm x 150m x 1" core	SOPSS315M	•	•	-	-	-
Matt - 440mm x 150m x 1" core	SOPSS440M	•	•	-	-	-
Gloss - 315mm x 1000m x 3" core	FD1L2	•	•	•	•	•
Gloss - 440mm x 1000m x 3" core	FD1L3B	•	•	-	•	•
Matt - 315mm x 1000m x 3" core	FDM1L2	•	•	•	•	•
Matt - 440mm x 1000m x 3" core	FDM1L3B	•	•	-	•	•

• Yes - No Non-exhaustive list. Consult us for full stock and availability.



MATRIX SINGLE SIDED SYSTEMS



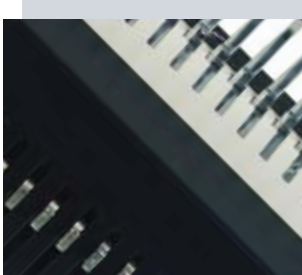
EASYMOUNT WIDE FORMAT SYSTEMS



LINEA ENCAPSULATION SYSTEMS



PEAK POUCH LAMINATING SYSTEMS



MAGNUM BINDING SYSTEMS



TRIMFAST TRIMMING & CUTTING SYSTEMS



MAGNUM CREASING SYSTEMS



PROLIFE FILM SUPPLIES

Vivid design and manufacture a wide range of laminating systems, specialising in function, style and reliability.

For years, we have been leading the field with our innovative product development, successfully building our brands and customer relationships that help us to introduce unique products in the marketplace.

So if you're looking to improve your finishing, start by calling us.

Vivid Laminating Technologies Ltd

St Georges House, Whitwick Road, Coalville, Leicestershire LE67 3FA England

0845 1 30 40 50 sales@vivid-online.com

vivid-online.com

Vivid care about the environment and is an ISO 14001 registered company.