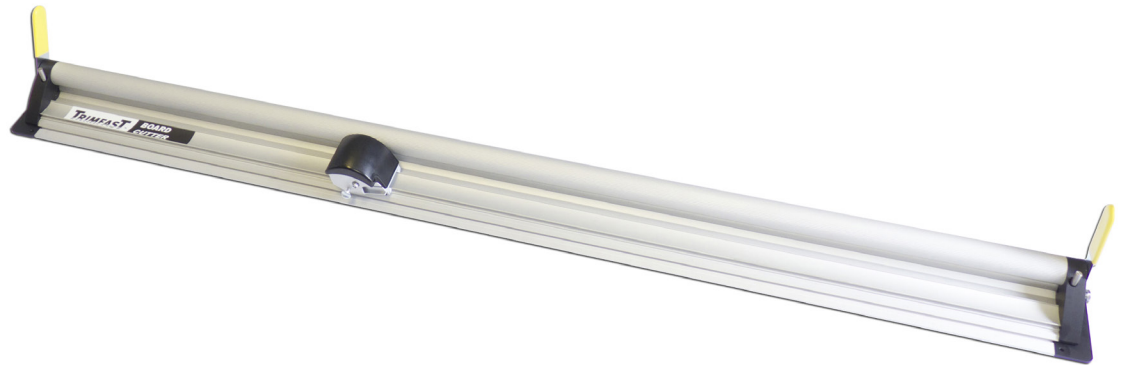


Product instruction manual

Trimfast Integrated Cutters

TFICS-60, TFICS-100, TFICS-150, TFICS-200, TFICS-250,
TFICS-300, TFICS-350, TFICS-400, TFICS-450, TFICS-500

TRIMFAST™



The Trimfast Integrated Cutting Systems are designed to be easy-to-use and extremely hardwearing.

Contents

Page 3 - Introduction

Page 4 - Cutter contents, Safety instructions, Specifications

Page 5 - Assembly

Page 6 - Operation

Page 7 - General maintenance, Adjusting the cutting head bearings, Spare parts

Page 8 - Warranty

Introduction

Thank you for purchasing the Trimfast Integrated Cutter.

The Trimfast Integrated Cutter is designed to be easy-to-use with two simple cutting elevators. The system will cut substrates of different thicknesses safely and accurately.

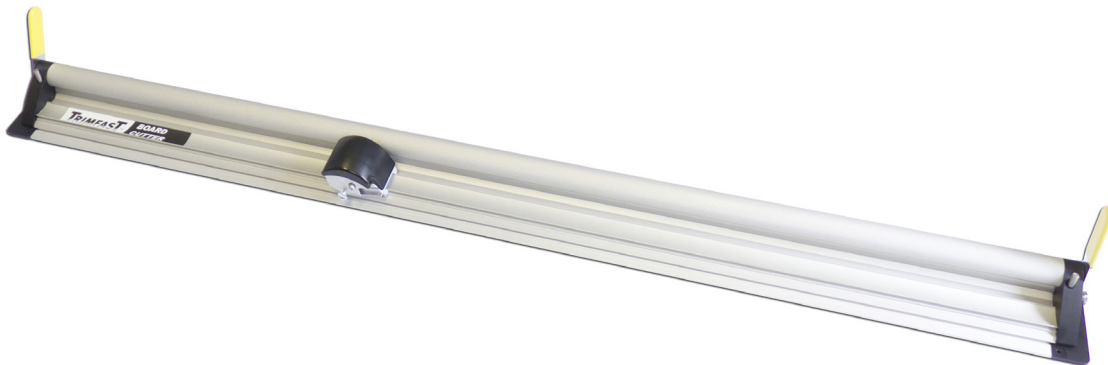
Elevating the cutter will allow you to align and cut your work single handed, an ideal solution for sign-making businesses who operate alone.

The systems base unit contains a cutting groove. This allows the blade to slice cleanly through the material, meaning that cutting mats are not required.

The cutter is made from aluminium, meaning the device is hardwearing and built to last, making it ideal for any workplace. It can be permanently fixed to a table, with no need for accessories.

The cutter is available in 10 different sizes, from 60cm (24") up to 500cm (200"), it also includes blade magazines for standard utility and scoring blades, as well as a textile cutting wheel and holder.

The Trimfast Integrated Cutter Pro is also available. It is made from two extrusions which are factory adjusted for increased accuracy.



Trimfast Integrated Cutter

Integrated Cutter Contents

After unpacking the Trimfast Integrated Cutter, check to make sure that you have all the parts and that there is no damage to the machine.

- Cutter rail, base and end plates assembly
- Right & Left hand handle assemblies
- Box of 100 utility blades
- One textile blade
- One scoring blade
- One allen key (2mm)
- One blade cartridge
- One textile blade cartridge

Safety Instructions

- Please read these instructions carefully. Note the safe operational requirements, warnings and cautions. Use the product correctly and with care for the purpose for which it was intended. Failure to do so may cause damage or personal injury, and will invalidate the warranty.
- Please keep instructions safe for future use.
- Wear appropriate eye protection during operation.
- Keep hands away from the cutting blade during operation.
- Only lift or move the Trimfast Cutter using the circular grip on the top of the rail. If you need to handle the cutter in any other way or if you need to move it away from its working position, the blade must be removed.

Specifications

	TFICS-60	TFICS-100	TFICS-150	TFICS-200	TFICS-250	TFICS-300	TFICS-350	TFICS-400	TFICS-450	TFICS-500
Size (cm)	60	100	150	200	250	300	350	400	450	500
Cutter Size (mm)	600	1000	1500	2000	2500	3000	3500	4000	4500	5000
Warranty*	1 year	1 year	1 year	1 year	1 year	1 year	1 year	1 year	1 year	1 year

Assembly

It is important that the Trimfast Integrated Cutter is used on a flat surface. A warped or bowed table top can create a twist in the rail resulting in a curved cut. Always use a cutting mat.



1. DO NOT REMOVE THE PACKAGING BANDS UNTIL INSTRUCTED.



2. Position the cutter on the table in its operating position, cut the packaging bands and remove them from underneath the cutter.



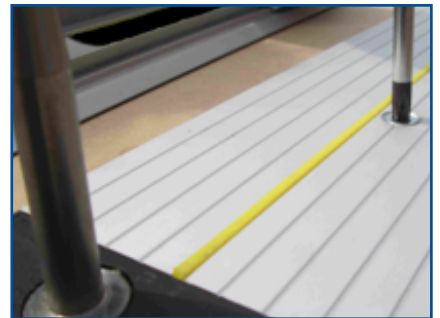
3. Using a 17mm spanner, fit a lifting handle to each end. Once tightened, the handles should move freely without any sideways movement.



4. Check that the cutter is in the correct position on the table and check that the base plate and end plates are in line.



5. Attach the two end plates to the table using the pan head screws provided. Check that each lifting handle operates correctly.

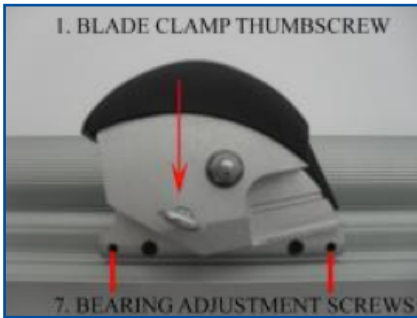


6. Remove the cutter from both guide rods by lifting vertically. Using the countersink head screws provided, fix the base plate to the table.

Check the grip of the Integrated cutter rail by using an A4 piece of paper. Place the paper under one end of the Cutter rail and try to pull the paper free. The weight of the Cutter rail should be enough to grip the paper. Repeat this test along the entire length of the Cutter rail and if necessary use paper, plastic or card spacers under the full width of the base to make it level.

If you want to make the table top flush with the aluminium base plate, build up the table using 6mm MDF or similar.

Operation



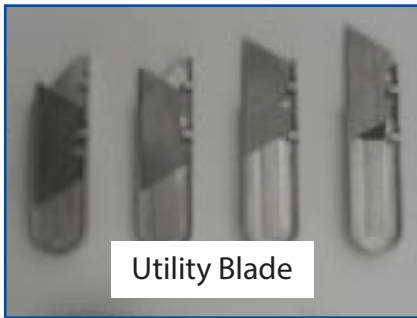
1. Loosen the blade clamp thumb screw and insert a cartridge.



2. The utility blade and scoring blade cartridges are inserted from the rear of the holder.



3. The textile blade cartridge is inserted from the front.



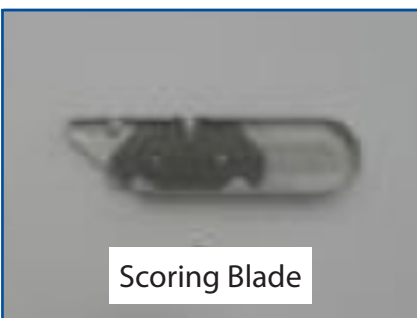
4. The utility blade can be located in any one of 4 positions depending on the thickness of material being cut. Fine adjustment can be made by undoing the blade clamp thumb screw and moving the cartridge itself.



5. To cut lightweight materials, place your right hand on the cutter head, depress the cutter and pull the cutting head towards you.



6. To cut heavyweight materials, place your left hand on the circular grip and apply downward pressure, place your right hand on the cutter head, depress the cutter with the palm of your hand and push away from you to cut. Multiple passes may be needed for thicker materials.



7. The scoring blade should be located in the cartridge. To score fracture sensitive plastics such as acrylic use the same technique as used for cutting heavyweight materials. To break, move the material so that the score line runs along the front edge of the table and using the cutter as a clamp, apply downward pressure to the overhanging plastic to break. (Safety glasses & gloves should be worn)



8. To cut, use the same technique as used for cutting lightweight materials. Blades can be replaced by undoing the knurled brass knob on the rear of the unit.

General Maintenance

Regularly clean the Trimfast Integrated Cutter using a dry cloth, stubborn stains can be removed with a cloth dampened with a little water/detergent.

Silicon spray can be used to lubricate the cutting head slideway. Never use oil/spirits to lubricate or clean the cutter. Some of the plastic components and bearings may be damaged.

Adjusting the cutting head bearings

The bearings used to control the cutting head are made from a high quality polymer and under normal use will last for an extremely long time.

As they settle into position you may find a slight amount of side play, this can be removed by tightening the two adjustment screws

Spare Parts

For Spare Parts please contact your supplier

Warranty & Incorrect Use

IMPORTANT INFORMATION

Your Trimfast Finishing System should reach you in perfect condition, however please retain all of the original packaging once you have unpacked your Finishing System in case you need to return it for repair. If your system arrives damaged or faulty in anyway, this must be reported to your supplier immediately. If the Finishing System is sent back for repair under warranty and is damaged in transit due to faulty packaging your warranty may be void.

Your Finishing System is guaranteed for 1 year from date of purchase covering defective parts and general wear and tear; it does not cover any damage to the blades.

E&O.E